

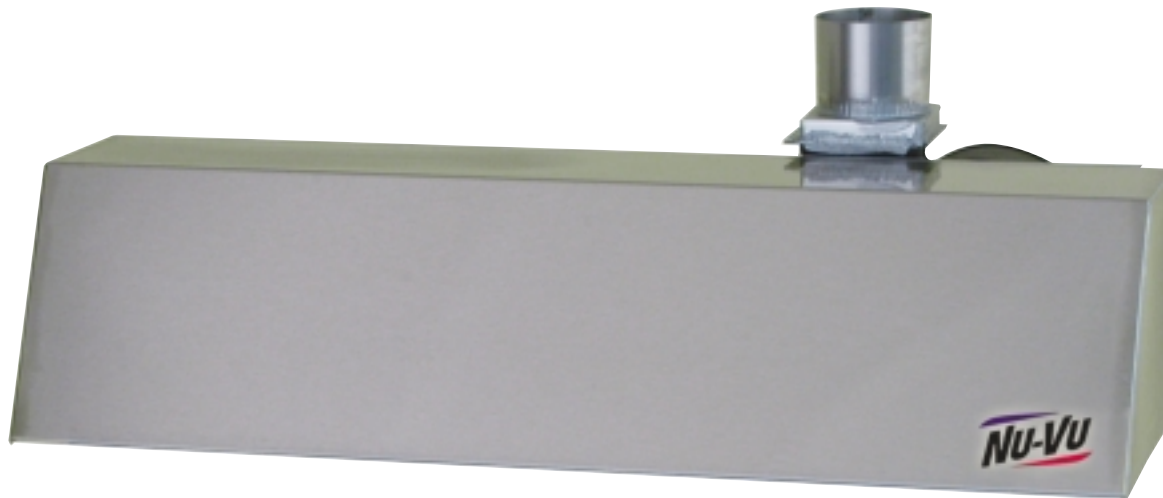
# HO-1

## NU-VU® Prefabricated Steam Deflector

Project \_\_\_\_\_

Item \_\_\_\_\_

Quantity \_\_\_\_\_



NU-VU® HO-1 Prefabricated Steam Deflector

### STANDARD FEATURES:

- Cord and plug

### LABORATORY CERTIFICATION AND APPROVAL



### SIZES:

(three widths available)

**HO-1** - 14" High, 38" Wide, 20-1/4" Deep  
356 mm High, 965 mm Wide, 514 mm Deep

**HO-1** - 14" High, 42" Wide, 20-1/4" Deep  
356 mm High, 1067 mm Wide, 514 mm Deep

**HO-1** - 14" High, 47" Wide, 20-1/4" Deep  
356 mm High, 1194 mm Wide, 514 mm Deep

**NU-VU's HO-1** prefabricated steam deflector features simple mounting procedures for use with your NU-VU oven or oven/proofer, and it comes standard with a 120-Volt cord and plug. The width of the steam deflector corresponds to the width of your unit. (We recommend that the steam deflector extend 4" on each side.)

### CONSTRUCTION:

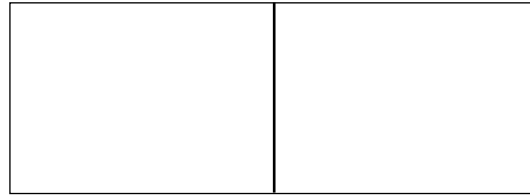
- Stainless steel construction



**NU-VU® Food Service Systems**

www.nu-vu.com  
5600 13th Street  
Menominee, MI 49858

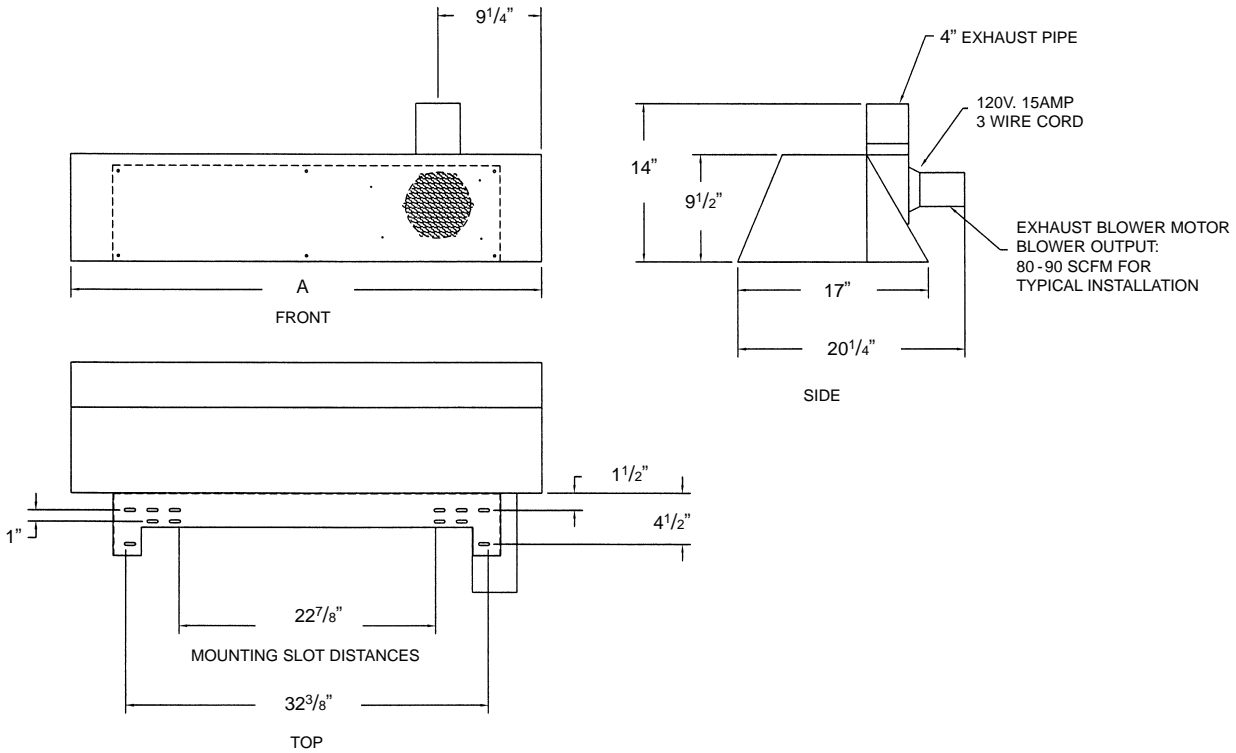
1-800-338-9886 Toll Free  
1-906-863-4401 Phone  
1-906-863-5889 Fax



Approval / Stamp

**HO-1 Prefabricated Steam Deflector**

**NU-VU**® HO-1 Prefabricated Steam Deflector



**SPECIFICATIONS:**

**ELECTRICAL:**

**SERVICE CONNECTIONS:**

- HO-1 comes equipped with 120-volt cord and plug
- NEMA 5-15P

**ELECTRICAL:**

- 120/1, 2 Amps

**LISTINGS:**

The HO-1 has NSF listings.



**DIMENSIONS:**

	Height	Width	Depth
<b>Exterior</b>	14"	38" or 42" or 47"	20-1/4"

**PACKING SIZE:**

24" High, 24" Wide, 50" Deep  
(610 mm High, 610 mm Wide, 1270 mm Deep)

**SHIPPING WEIGHT:**

100 Pounds (45 Kg), FOB Menominee, MI 49858