

SPRAY NOZZLE REPLACEMENT INSTRUCTIONS

FOR SUBWAY MODELS OP-2FM, OP-3FM AND SUB-123

Subway proofers equipped with the Automist option should have the water injection nozzle inspected and replaced at regular intervals, as determined by usage and water hardness. Call NU-VU service at 800.338.9886, option 1 for replacement parts.

1. Remove the proofer element cover by lifting up the element cover using the two tabs mounted on the cover. Slide it out through the front of the proofer (Fig. A & B)



Fig. A



Fig. B

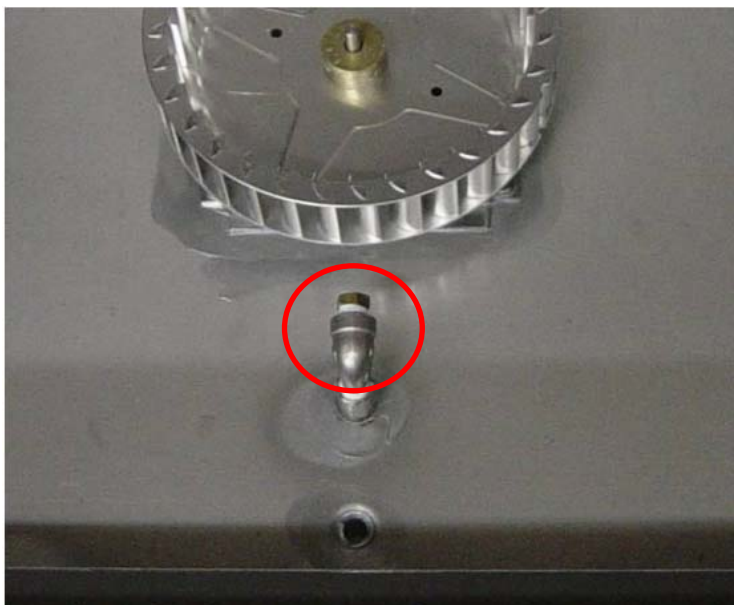


Fig. C

2. Using a 7/16" wrench, remove the nozzle from the fitting in front of the blower wheel. (Fig. C)
3. Replace with the new nozzle and tighten, using the 7/16" wrench.
4. Replace the element cover.